

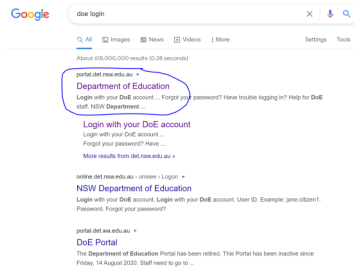
Homework

Where can it be found?

All CPS homework is uploaded to Google Classroom each week by Friday afternoon. Google Classroom can be accessed via a desktop computer/laptop, tablet or smart phone.

How to access Google Classroom

1. Google Search - DOE Login



2. Login using your child's username and password

Login with your DoE account

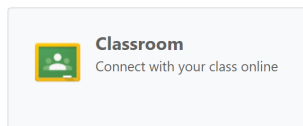
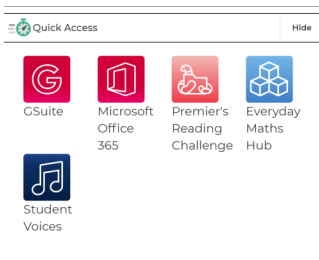
User ID

Example: jane.citizen1

Password

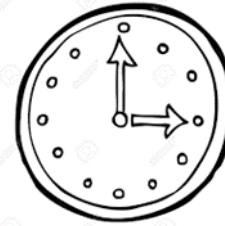
[Forgot your password?](#)

3. Select G Suite and then Classroom



Homework Tips and Tricks

**Set a routine.
Experiment with a time
that works for your
child.**



**Establish a distraction
free study space.**

**Create an incentive
plan with
extrinsic reward.**

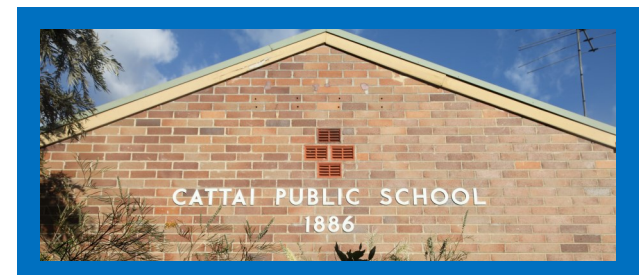


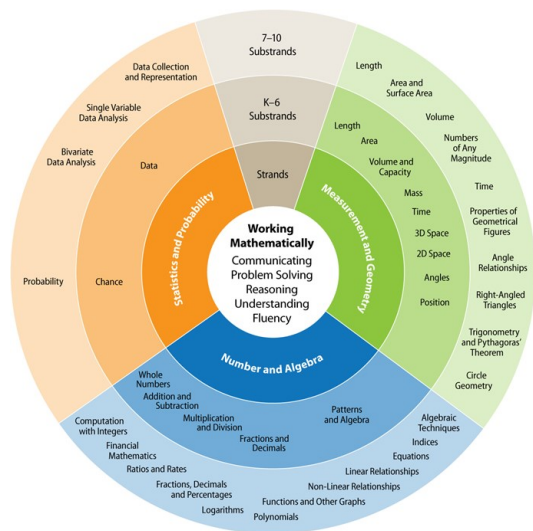
**Build the relationship
with your child and
show interest in what
they are learning.**

**Ask the teacher for help if
required.**



CPS Parent Information Night - Mathematics





The diagram represents the relationships between the strands and substrands only. It is not intended to indicate the amount of time spent studying each strand or substrand.

'Mathematics in K–10 provides students with knowledge, skills and understanding in Number and Algebra, Measurement and Geometry, and Statistics and Probability.'

NSW Mathematics K-10 Syllabus.

Number and Algebra Strands

- Whole Number
- Addition and Subtraction
- Multiplication and Division
- Fractions and Decimals
- Patterns and Algebra

Stage Descriptions

- ES1 - Kindergarten
- S1 - Year 1 & 2
- S2 - Year 3 & 4
- S3 - Year 5 & 6
- S4 - Year 7 & 8

What is it?

The CPS Mathematics Assessment focuses on the Number and Algebra section of the Mathematics Syllabus. The assessment covers all the 'Hills to Die On' from K-6. It also includes a Stage 4 component (Year 7 & 8) for those students who require further extension.



How does the assessment impact student learning?

- Targeted Mathematics Groups are created based on the Assessment.
- Learning goals are created based on student assessment results.
- Students work in small guided groups on their individualised learning goals.
- Students in older grades are given a copy of the assessment to enable them to set their own goals, reflect on feedback and track their own growth.



Tracking Achievement and Progress

The CPS Mathematics assessment tracks both growth and achievement;

- When a student achieves an indicator, this is referred to as one point of progress.
- Students should achieve 10 points of progress throughout the year (2 points per strand).
- Expected achievement and progress levels can be found on the back of the assessment.
- Expected achievement levels show how many indicators (points) students should have achieved by a specific grade/term.
- Expected progress levels shows how much growth a student should make per term.

Expected Achievement Scores

	Term 1	Term 2	Term 3	Term 4
Kindergarten	2.5	5	7.5	10
1	12.5	15	17.5	20
2	22.5	25	27.5	30
3	32.5	35	37.5	40
4	42.5	45	47.5	50
5	52.5	55	57.5	60
6	62.5	65	67.5	70
7	72.5	75	77.5	80
8	82.5	85	87.5	90

Progress Scores (1 year's worth of progress for 1 year's worth of teaching)

Term 1	Term 2	Term 3	Term 4
2.5	5	7.5	10

