



# CATTAI PUBLIC SCHOOL

## PELICAN POST



**Phone:** 02 4572 8445 **Fax:** 02 4572 8760

**Email:** [cattai-p.school@det.nsw.edu.au](mailto:cattai-p.school@det.nsw.edu.au)

*Term 3 Week 10 — 17 September 2021*

### PRINCIPAL'S REPORT

#### Some dates to remember

- School holidays begin this week on Saturday the 18th September.
- School reopens again on Tuesday the 5th October (for children of essential workers only).
- On the 25th October it is anticipated that students will begin to return to school. More details about how this will look in our small school setting will be released early next term.
- Thursday the 16th December is the last day of school for 2021 for students.
- Friday the 17th December is the last day of school for Staff for 2021.



#### Learning Grids

Staff have been busy thinking of ways to increase engagement for what will hopefully be the final weeks of lockdown early next term. We have found that when we have set tasks that allow the students choice in what they are learning about we are getting a higher standard of work submitted by students. So for each of the Key Learning Areas, that are not English and Mathematics, we are making Learning Grids. These Grids consist of 9 different learning tasks that the students can choose from and they include an appendix of all the resources that are needed for each task. The idea is that students choose 1 idea per week and then post their learning to google classroom. So make sure you keep these learning grids and attached appendixes in a safe place as they will be needed from week to week. We are hoping this greater level of choice in learning will help keep our learners engaged right up until they return to school.

#### School Safe Operations

Found within this newsletter, overpage, is the School Safe Operation guide that the Department of Education has provided to help guide schools during the different levels of restrictions. As we work our way through the different levels and as restrictions ease this will help clarify what restrictions correlate with which levels.

#### Booklet pick up for Term 4

With the first day being a public holiday learning from home booklets will be being printed ready for pick up on the first Tuesday back (5th October). All things going to plan they should be ready after midday. Please phone the school ahead so you know that they are done but also so CPS staff can bring them out to the car park.

#### A big thank you

From all the team here at Cattai PS I want to thank all our amazing community members, for what could very well go down in history for some of us, as the most challenging term we have ever faced. I am personally very grateful for the way in which parents and family members have risen to the challenge of supporting the learning of our Cattai PS students. Like most teachers across the state we all wait anxiously for our students to return and find out how far they have progressed along their learning journeys. This anxiousness is put at ease knowing how amazing our community is and seeing the hard work of our students over both zoom sessions and google classroom. Enjoy a well earned break, even if it is only just a break from learning from home.

Take care  
Robert Hawkes  
Principal  
Cattai Public School  
[robert.william.hawkes@det.nsw.edu.au](mailto:robert.william.hawkes@det.nsw.edu.au)

# COVID-safe school operations

## Overview

- Students and staff to not attend school if they have symptoms; negative COVID-19 test required prior to returning to school
- Parents, carers and visitors are allowed on site
- QR code check-in and check-out required for all staff and visitors
- COVID-19 Safety Plans required in line with NSW Health advice (such as large gatherings or events)
- Activities such as singing, chanting, choirs, bands and school performances allowed in line with broader Health settings

## Level 1

School operating in a COVID-safe way

- Inter-school sport in line with community sport guidelines
- Community use in line with broader Health settings
- SRE/SEE (externally provided religion and ethics classes) operational
- Community Language Schools operational
- P&C on site
- Additional cleaning measures in place

- Staff and students are supported to wear a mask or face covering should they choose to do so.

## Level 2

COVID-safe; restrictions on activities and non-essential visitors

- As per Level 1, and:
- Non-essential visitors not allowed on site (including parents and carers)
  - Staff identified as vulnerable supported to work from home
  - Activities such as singing, chanting, choirs, bands and school performances allowed in outdoor settings only

- Assemblies must have COVID-safe practices in place and no parents or carers are allowed
- Excursions within local government area (LGA) only, and strongly recommended to be outdoors and within walking distance

- While in indoor settings in schools, masks or face coverings are recommended for all staff, and all students in Year 7 and above.

## Level 3

COVID-safe; face-to-face learning allowed on site; further restrictions on activities and non-essential visitors

- As per Level 2, and:
- Mask wearing requirements
  - Introduction of staggered breaks and reduced mingling of student cohorts wherever possible
  - Activities such as singing, chanting, choirs, bands and school performances not permitted
  - School canteens can operate with conditions

- No assemblies
- No excursions
- No community use (except early childhood services and OOSH services)
- Uniform shops are online
- No SRE/SEE (externally provided religion and ethics classes)
- No Community Language School on site

- While on school sites, both indoors and outdoors, masks or face coverings are mandatory for all staff, and all students in Year 7 and above.

## Level 3 plus

COVID-safe; face-to-face learning allowed for certain cohorts if vaccination rates achieved; restrictions on activities and non-essential visitors

- As per Level 3, with following conditions:
- Return to school will be based on community settings such as adults fully vaccinated and levels of community transmission
  - Only vaccinated staff on site
  - Students in cohorts (including split classes) starting with staggered return of priority cohorts
  - Exams as per Health approved COVID-safe HSC guide

- Minimised interactions and contact within student cohorts
- Staff interactions limited with physical distancing
- Staggered access to school facilities and shared spaces such as libraries and canteens
- Drop-offs, pick-ups and break times staggered by cohort

- While on schools sites masks are mandatory indoors and outdoors for all staff and all students Year 7 and above. Masks are strongly recommended for primary students.

## Level 4

Learning from home encouraged; schools are open for families who need it

- Families are encouraged to keep their children at home, with no student to be turned away
- Schools activate plans to support continuity of education for all students learning from home

- Where students and staff are at school, Level 3 guidelines apply, and:
- No community use (except early childhood services)
  - No canteens

- While on school sites, both indoors and outdoors, masks or face coverings are mandatory for all staff, and all students in Year 7 and above.

## Level 4 plus

Minimal students and staff on site; learning from home encouraged; schools are open for families who need it

- Schools operate learning from home, with stricter guidance for students and staff on-site
- Schools are actively encouraged to further minimise students attendance with the support of increased community messaging
- Schools remain open with absolute minimum of staff – 2 staff are required on site for safety reasons, and only as many additional staff as required to maintain supervision and to meet immediate needs of the school. If a school requires more than 5 staff members to attend, they must consult with their Director, Educational Leadership

- Where students and staff are at school, Level 3 guidelines apply, and:
- No community use (except early childhood services)
  - No canteens

- While on school sites, both indoors and outdoors, masks or face coverings are mandatory for all staff, and all students in Year 7 and above.



# CATTAI PUBLIC SCHOOL

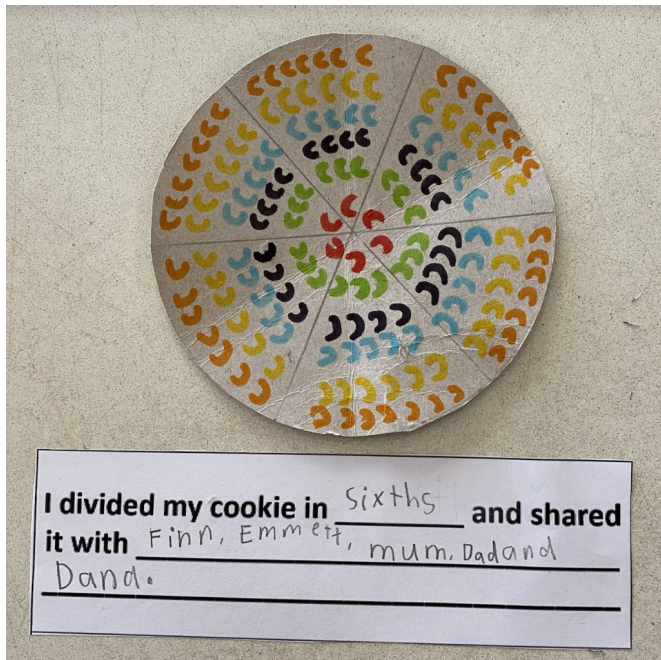
## TERM 4 CALENDAR

### TERM 4 CALENDAR

Wk	Monday	Tuesday	Wednesday	Thursday	Friday
<b>W1 Oct</b>	4 Public Holiday	5 Children of essential workers return	6	7	8
<b>W2 Oct</b>	11	12	13	14	15
<b>W3 Oct</b>	18	19	20	21	22
<b>W4 Oct</b>	25 Anticipated student return date (More information to come)	26	27 Kindy Transition Day 1 (TBC)	28 P&C Meeting over Zoom	29
<b>W5 Nov</b>	1	2	3 Cupcake Day (TBC) Kindy Transition Day 2 (TBC)	4	5 Parent Assembly (C3) Virtual (TBC)
<b>W6 Nov</b>	8	9	10 Kindy Transition Day 3 (TBC)	11 Remembrance Day	12
<b>W7 Nov</b>	15	16	17 Kindy Transition Day4 (TBC)	18	19
<b>W8 Nov</b>	22 Leaders Speeches	23	24 Sports Captain Speeches	25 P&C Meeting over Zoom	26
<b>W9 Nov/ Dec</b>	29 Swim School Week (TBC)	30	1 Cupcake Day (TBC)	2	3
<b>W10 Dec</b>	6	7	8 Swimming Carnival (TBC)	9 Celebrations of Learning (TBC)	10 Mini Fair (TBC)
<b>Wk 11 Dec</b>	13	14 Year 6 Farewell (TBC)	15 SRC Movie Day (TBC)	16 Community Breakfast (TBC) Year 6 Send Off (TBC)	17 Staff Development Day

C1

## Last week in C1 we practiced..



Sharing cookies into different fractions. Hudson

Creating optical illusions in art.

Billy



Writing information reports on emus.

Winter, Addison and Harper

### C2

Eastern dwarf tree frog

Eastern dwarf tree frogs live in Australia in Sydney they live in people gardens and they love being near the lily of the Nile. I actually get millions of them at my house and they love the lily of the Nile. The lily of the Nile has beautiful purple flowers and long thick leaves. Eastern dwarf tree frogs eat crickets, cockroaches, spiders and sometimes new born mice. The adults get to about 2mm and the babies can be 2mm they are so cute!!! They can change colours they can be lime green, pale green, green and brown, silver grey, copper and brown. The eastern dwarf tree frog hates salt water or vinegar so don't spray that on your plants. The frog loves very dark spaces and water.

Chloe S and Emma writing an information report on the Eastern Dwarf Tree Frog and their family dog.

I HAVA DOG CALD  
 Diesel. HE LOOKS  
 LIKE A LITTLE BEAR  
 HIS BLACK AND WHITE  
 HE DOES NOT HAVE  
 MUCH WHITE. HE BLANCS  
 IN THE NIGHT. HE EATS  
 MEAT AND DOG CIPLE. HE LIVES  
 WITH US HE HAS OWN CENEL.  
 Fact:-

DOGS CAN SHIT  
 AND BREATN AT THE  
 SAME TIME. DOGS NEED  
 WET VOICES  
 BECAUSE SO THEY  
 DON'T GET DRIETHEG  
 DOGS CAN SMEL 40 TIMES  
 LATTER

## Spotlight work from C2

Alex writing an introduction to her information report on the pink fairy Armadillo.

Pink fairy armadillo

The ~~pink~~ pink fairy armadillo live in sandy plains, grasslands and sand dunes. The pink fairy armadillo live in central Argentina. The pink fairy armadillo lifespan goes for 5-10 years. The pink fairy armadillo lifespan goes for 5-10 years. The size of the fairy armadillo is quite long time right. the size of the fairy armadillo is quite small 3.5 inches - 4-5 inches. The weight is 120 grams now that is so light.

Sophia demonstrating balancing in mathematics.

**Balance Math**

Use the balanced scales to solve each problem.

**Problem 1**

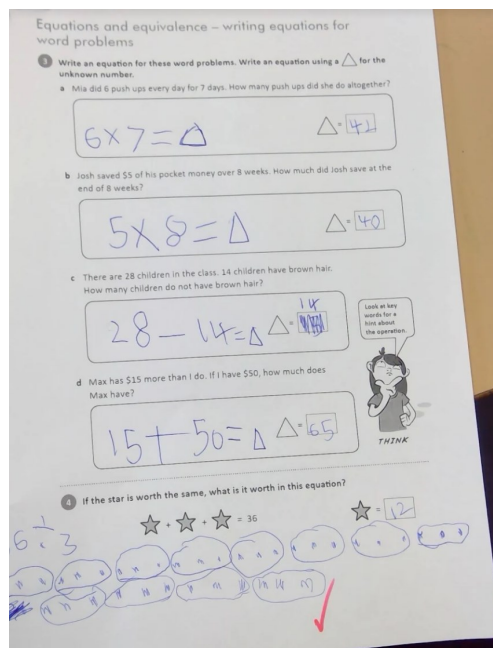
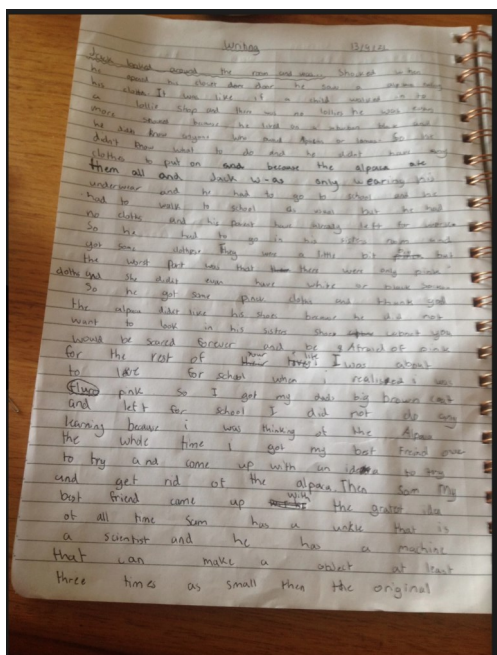
★ = 20  
 □ = 30  
 ? = 10

**Problem 2**

○ = 3  
 ◆ = 30  
 ? = 40

### C3

**Excellent work again C3! You all have earned a very relaxing holiday, have fun and be safe!**



### Minecraft

Minecraft is a sandbox game where you can either play on survival or creative. In creative you can use your creativity to build houses, Make redstone contraptions and there is endless possibilities. Survival is a mode that you can speedrun Minecraft or take your time to get resources to defeat the ender dragon. Minecraft is developed by a Swedish game developer **Mojang Studios** the game was made by a person called Markus Notch Persson.

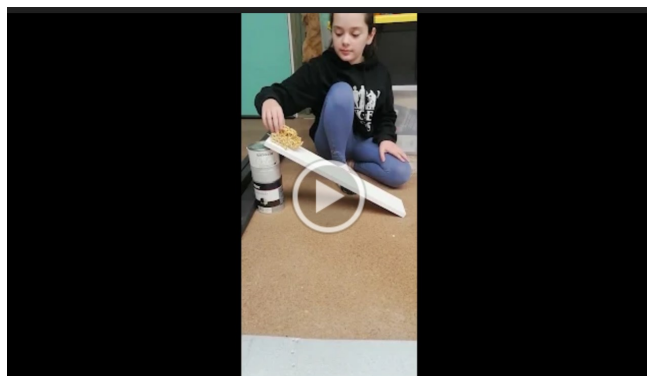
There are multiple consoles that Minecraft can be played on such as: Playstation,Xbox,Pc,Nintendo Switch, and iPad/tablet. It was first made publicly in May 2009 then it was fully released in November 2011. Minecraft has won several awards and has been cited as one of the best videogames ever. Mojang have released three more different Minecraft games such as: Minecraft Dungeons, Minecraft Earth and Minecraft storymode.

Minecraft was then bought from Microsoft then Microsoft added maps and texture packs to promote other shows and videogames such as: Halo, Adventure Time,Skyrim,Mass effect, Fallout and more. The mobs in Minecraft are one of the most unique parts of it the creeper was made by a mistake of making a pig and the skeleton is a mob that uses bows to defeat the player but has unlimited arrows and it only drops one. My personal favourite mob is an enderman because it has such majestic purple eyes. Minecraft has three dimensions the Overworld, The nether and The end.

The nether is a fiery realm that has a ton of hostile mobs such as: Ghast,Zombie Pigman,Wither Skeleton,Blaze,Piglin,Piglin Brute, Hoglin and Zoglin. There are two structures in the nether they are a bastion remnant and a nether fortress. A bastion remnant is a great place to find piglins to trade gold with and its also a great place to get some really good loot. A nether fortress is a great plac to get wither skulls,blaze rods and some gold stuff which is basically useless but you still able to get it if you want.

The end is a dark realm that you go to defeat the ender dragon or get pearls or even go to end city where you can find a bunch of good loot but these annoying little boxes called shulkers with make you o flying up then you will take fall damage. There are also enderman in the end but they wont harm you unless you look in there eyes. In end city you can find wings called elytra and to go really fast with them you need to use fireworks but I would recommend flight duration fireworks because you will get hurt using regular fire works]

The over world is the main realm that you spawn in and you can find a ton of structures with good loot in them. The main structure is a village which can have some good loot but if there is a black smith you will get some good loot for sure. There are so many different variants of villagers I cant even count. To protect the village there is a iron golem and if you hit the iron golem or a villager the iron golem will try to defeat you but most people defeat the iron golem for some iron ingots.





<b>PRESIDENT:</b>	<b>Yana Dennis-Smith</b>	Tel: 0413 323 752
<b>VICE PRESIDENT:</b>	<b>Rebecca Lehrer</b>	Tel: 0430 022 820
<b>TREASURER:</b>	<b>Linda Hughes-Kinsela</b>	Tel: 4575 0626 or 0407 406 493
<b>SECRETARY:</b>	<b>Kim Smith</b>	Tel: 0419 435 022
<b>HOT LUNCH CO-ORD:</b>	<b>Rebecca Lehrer</b>	Tel: 0430 022 820
<b>UNIFORMS:</b>	<b>Carly Hawkes</b>	Tel: 0438 447 145
<b>BOOKCLUB:</b>	<b>Anne Atkins</b>	Tel: 0432 539 589
<b>DOLLARMITES:</b>	<b>Renee Slawski</b>	Tel:
<b>CORRESPOND'E SEC:</b>	<b>Kim Smith</b>	Tel: 0419 435 022
<b>PUBLICITY OFFICER:</b>	<b>Jen Walden</b>	Tel: 4573 6111
<b>GRANTS CO-ORD:</b>	<b>Jen Walden</b>	Tel: 4573 61111
<b>CATTAI CATCH CO-ORDs:</b>	<b>Karen Brand</b>	Tel: 0419 774 277
	<b>Linda Hughes-Kinsela</b>	Tel: 4575 0626 or 0407 406 493
	<b>Amie Davis</b>	Tel: 0431 063 736
	<b>Luke Davis</b>	Tel: 0400 838 860

## **IMPORTANT DATES / REMINDERS**

**Next P&C:** Our next P&C meeting will be on 28th October — 7:00pm.

At this stage if it is via zoom see the link and meeting details below.

Keep an eye out in future newsletters if this changes.

, [https://nsweducation.zoom.us/j/68802840532?](https://nsweducation.zoom.us/j/68802840532?pwd=ZWVVOFAra2JzejVjanlnZUhtTitPQT09)

[pwd=ZWVVOFAra2JzejVjanlnZUhtTitPQT09](https://nsweducation.zoom.us/j/68802840532?pwd=ZWVVOFAra2JzejVjanlnZUhtTitPQT09)

Meeting ID: 688 0284 0532

Passcode: cattaipc